



MARKWEL
LAMINATES

Luminous & Admiring



NH 8A, Sokhada Road, At-Vaghpar, Dist Morbi, Gujarat 363641 (INDIA)
Email : info@fastenlaminare.com | Web: www.fastenlaminare.com



www.fcs-india.com / 0 9377 665409

PREMIUM INTERIOR LAMINATES



Luminous & Admiring





Luminous & Admiring



MARKWELTM
LAMINATES

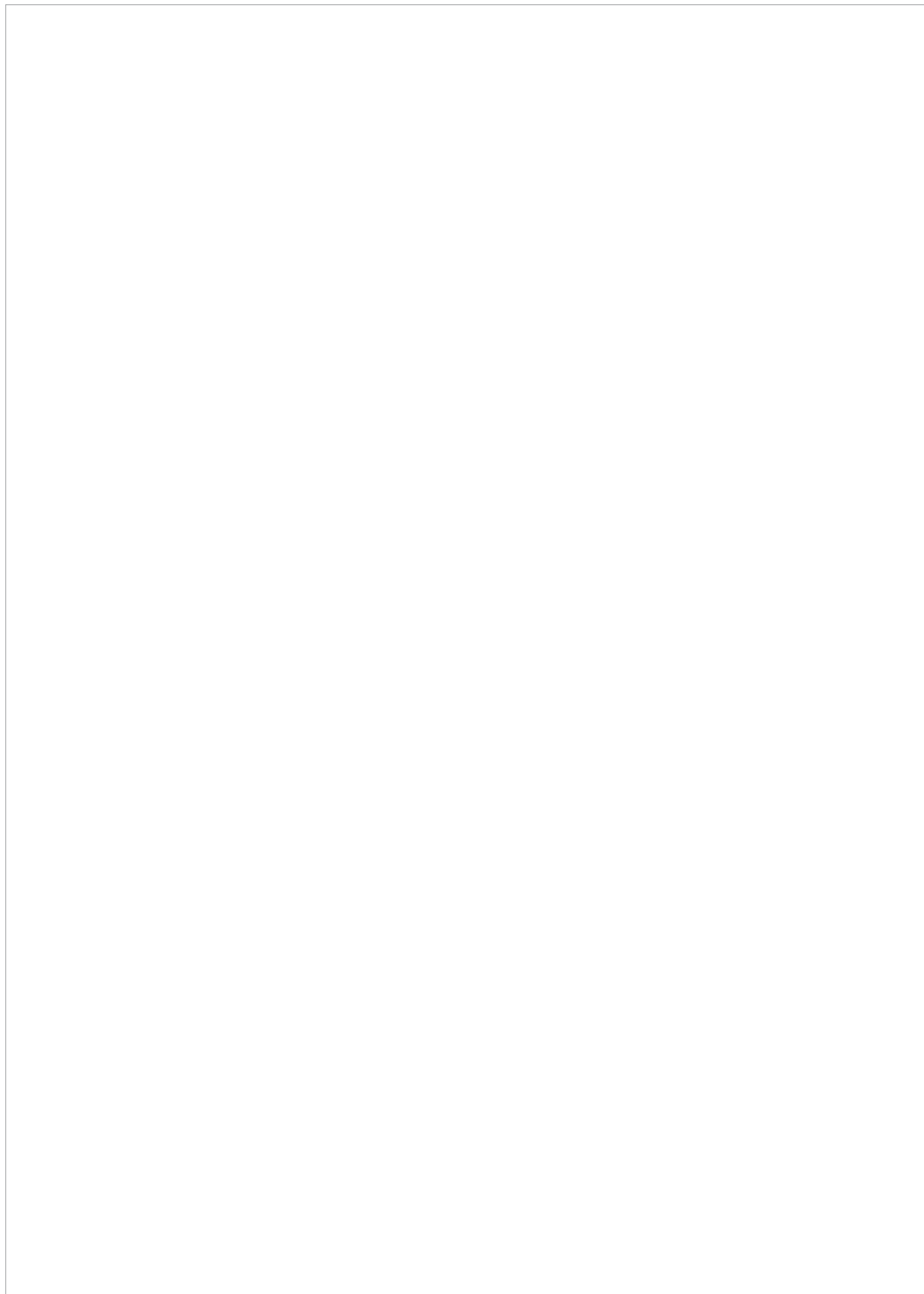
COMPANY PROFILE

Established in 2014, Fasten Laminate has been bringing surfaces to life with a solid reputation for quality and reliability, we are well-equipped with fully functional ultra-modern machinery and avant-garde technologies, these elements support us to manufacture HPL laminates with lofty level of precision within stipulated time frame.

In addition, Our Designer interior laminates are highly admired by our clients for their features such as sturdiness, smooth surface finish, high strength, moisture & termite resistance and durability.

Further, we check our products on various quality parameters and deliver these in sturdy packaging material to make certain safe transit. Owing to our moral business policies and easy payment modes, we guarantee to make crystal clear and simple business transaction with the clients.

Thank you



M8-6065



M8-6404



M8-6069



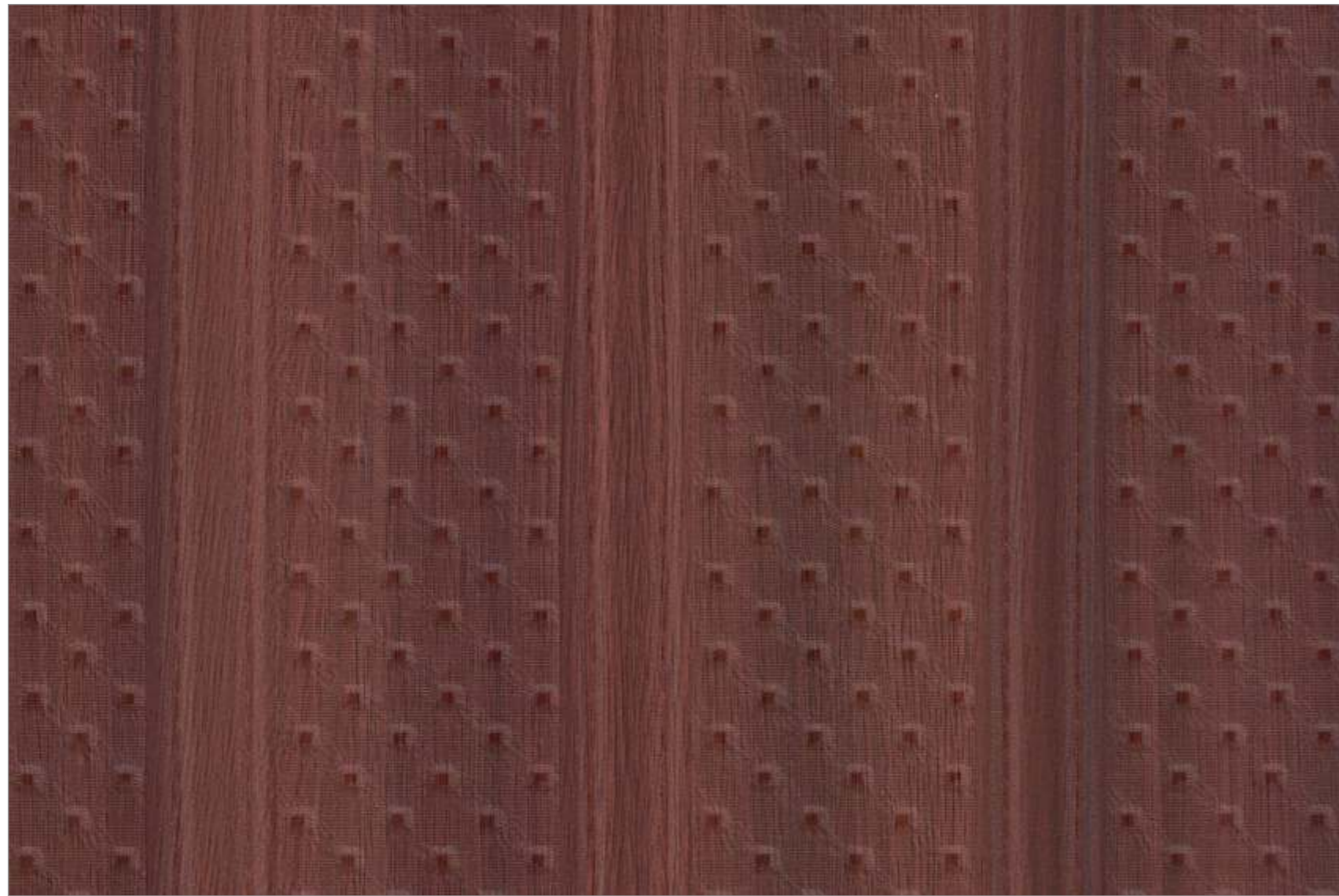
M8-6410



M8-6068



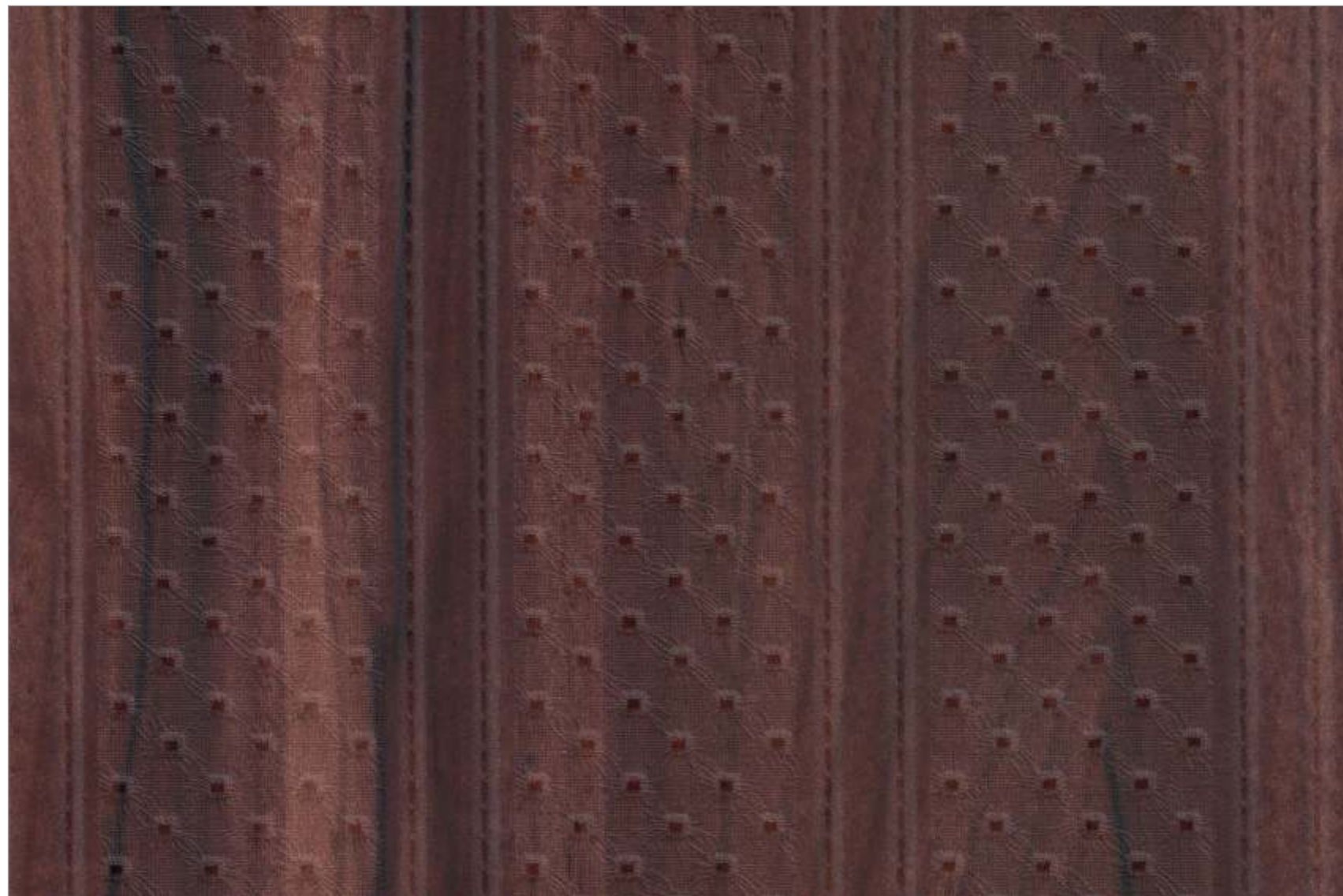
M8-6409



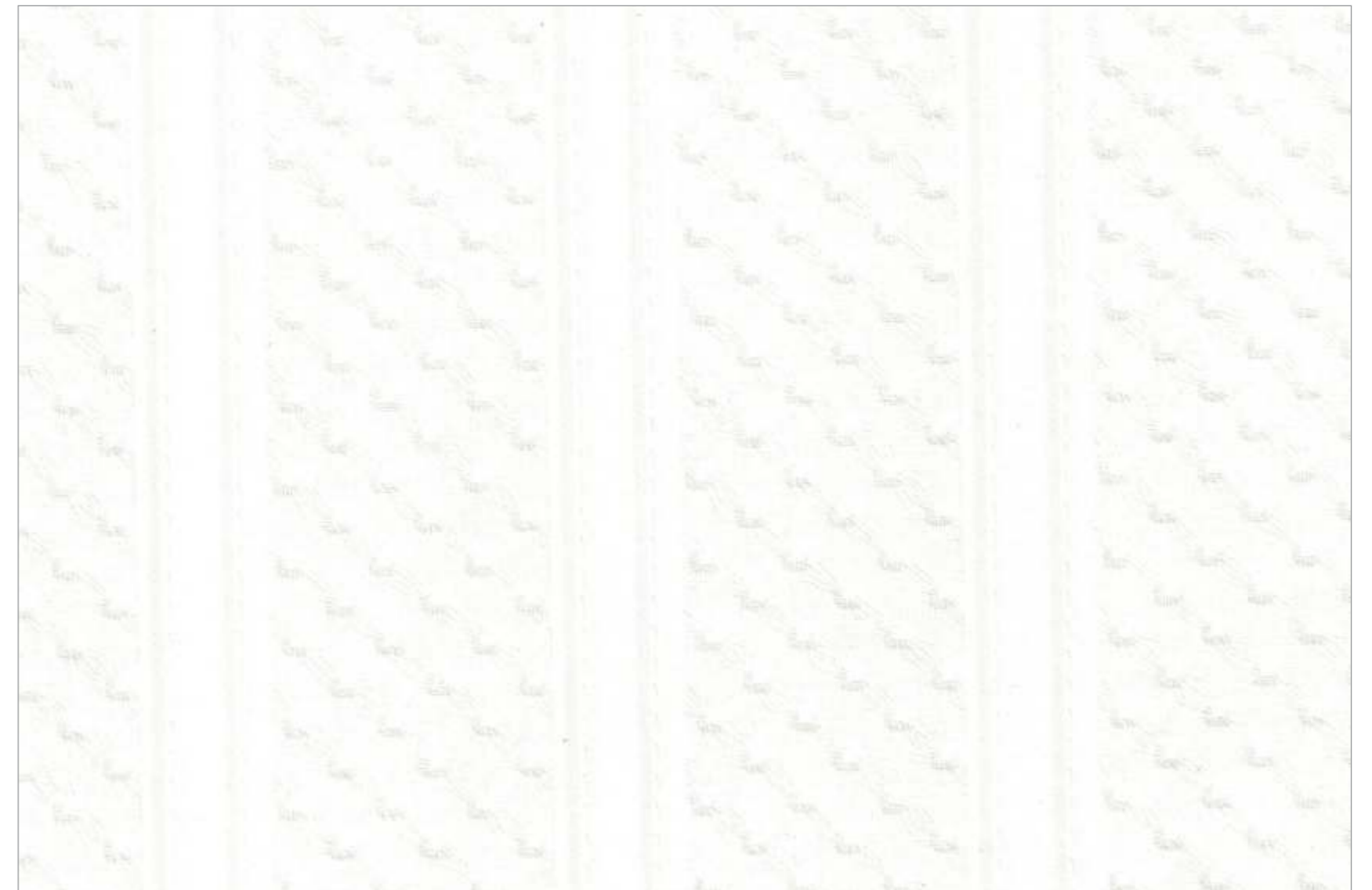
M2-6412



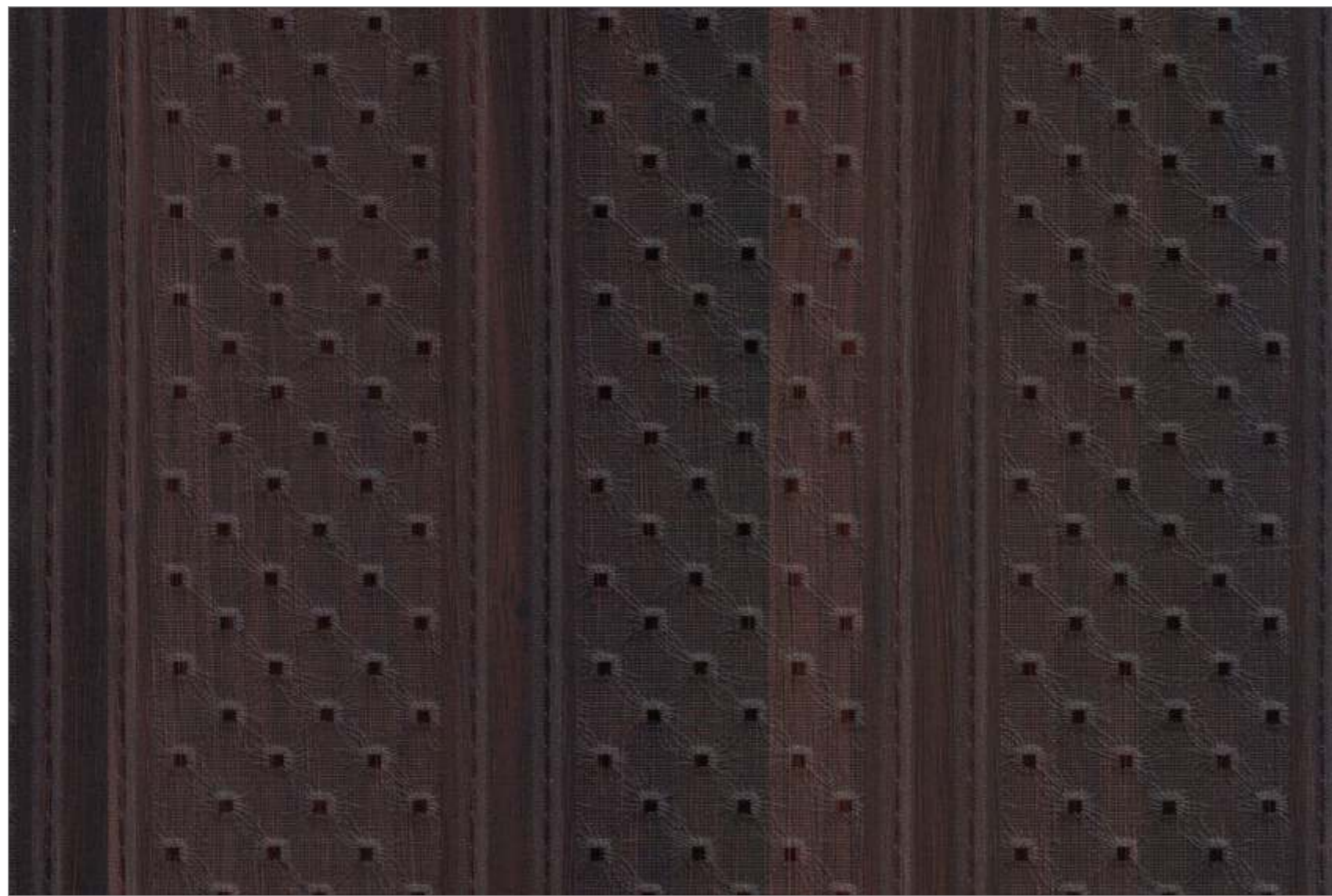
M2-6411



M2-6066



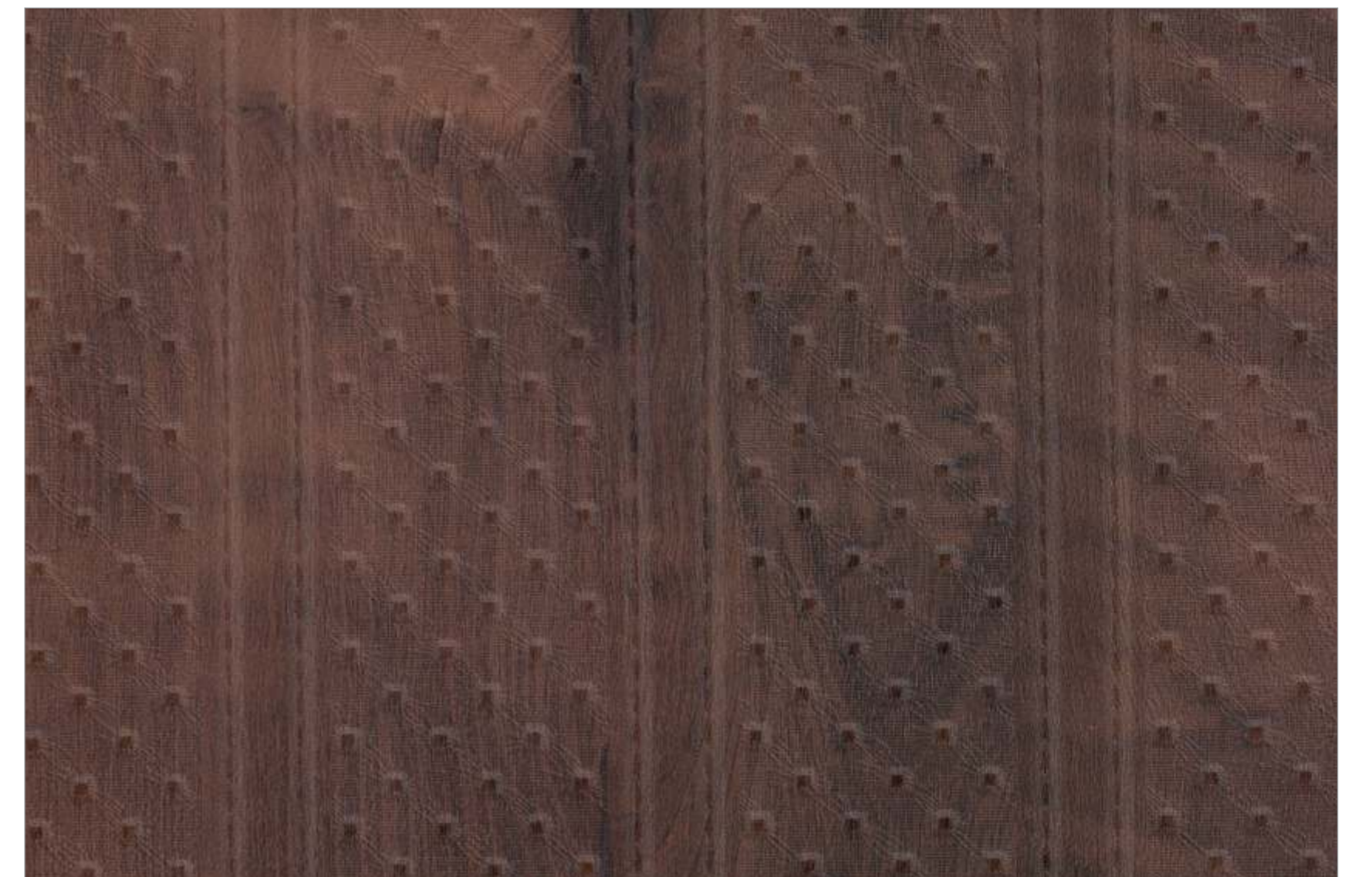
M2-6111



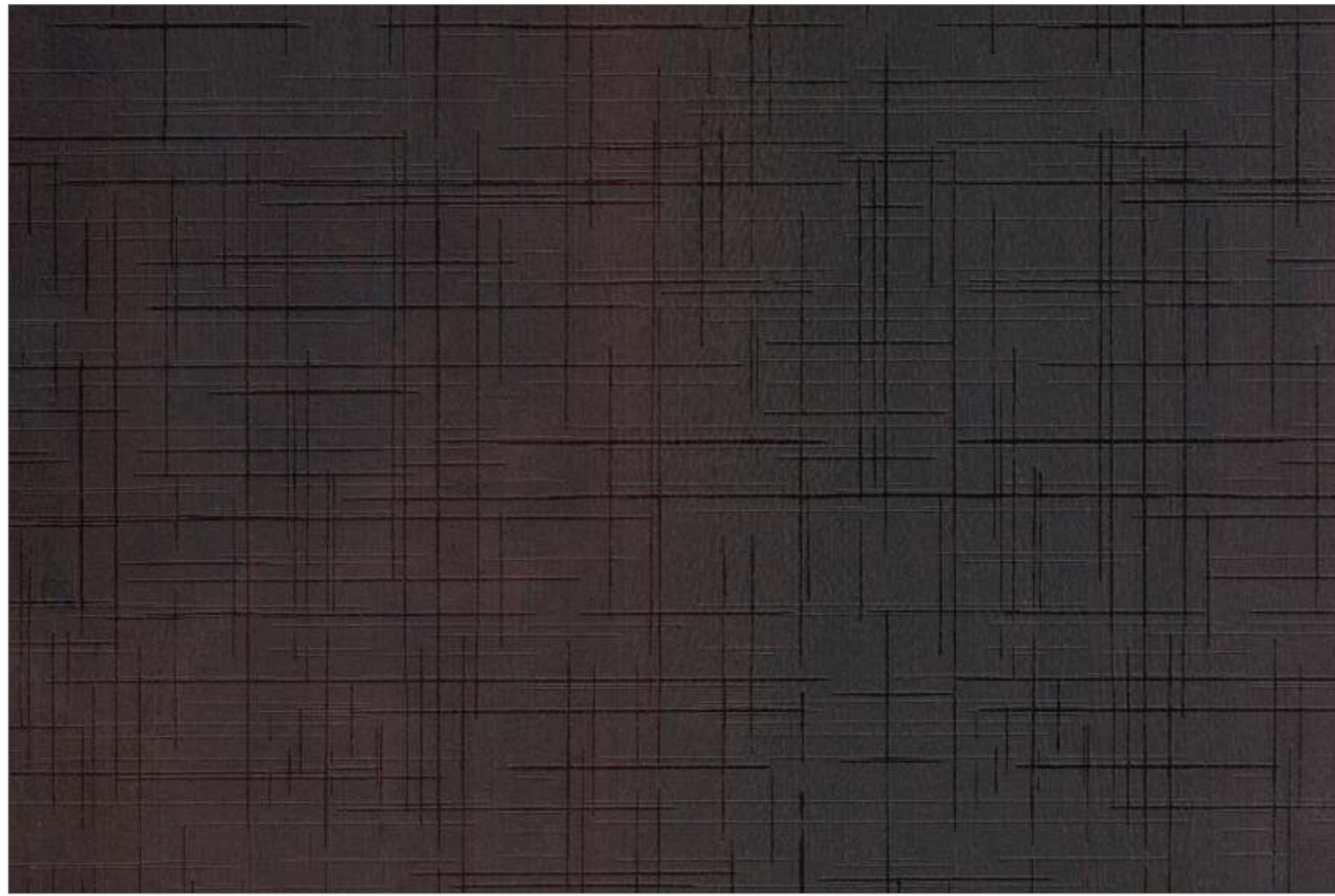
M2-6406



M2-6405



M2-6408



M7-6047



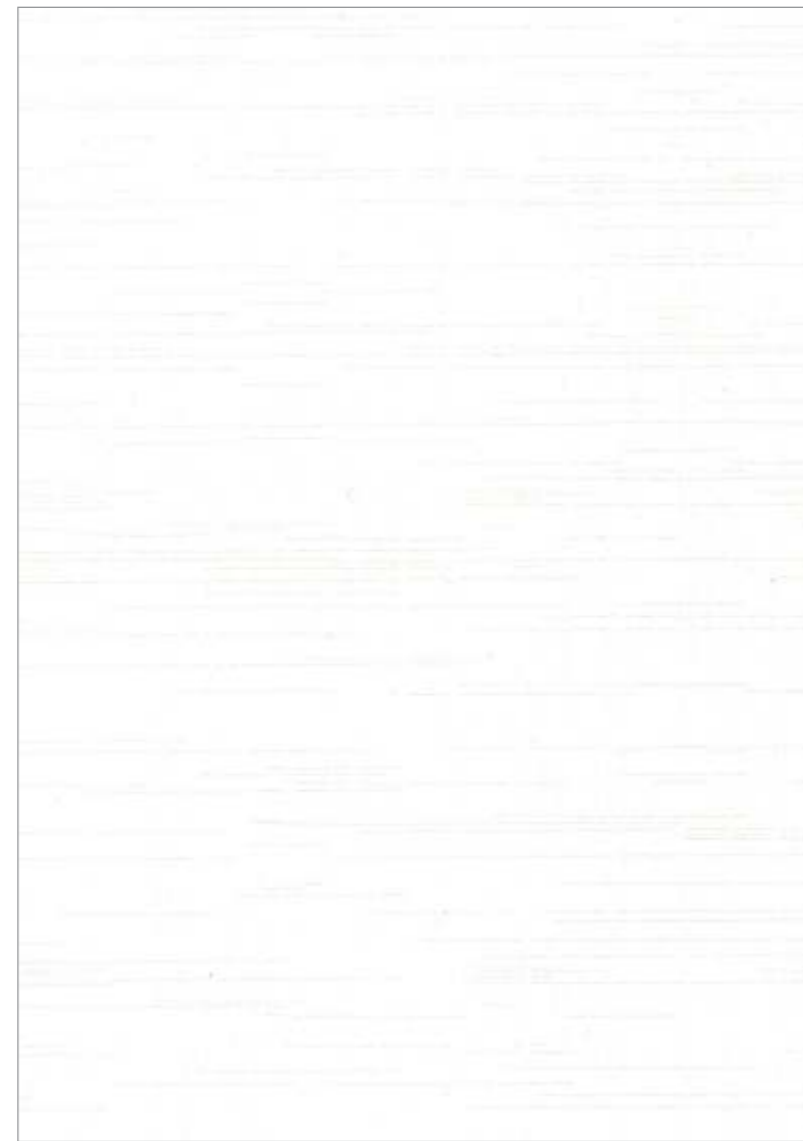
M7-6048



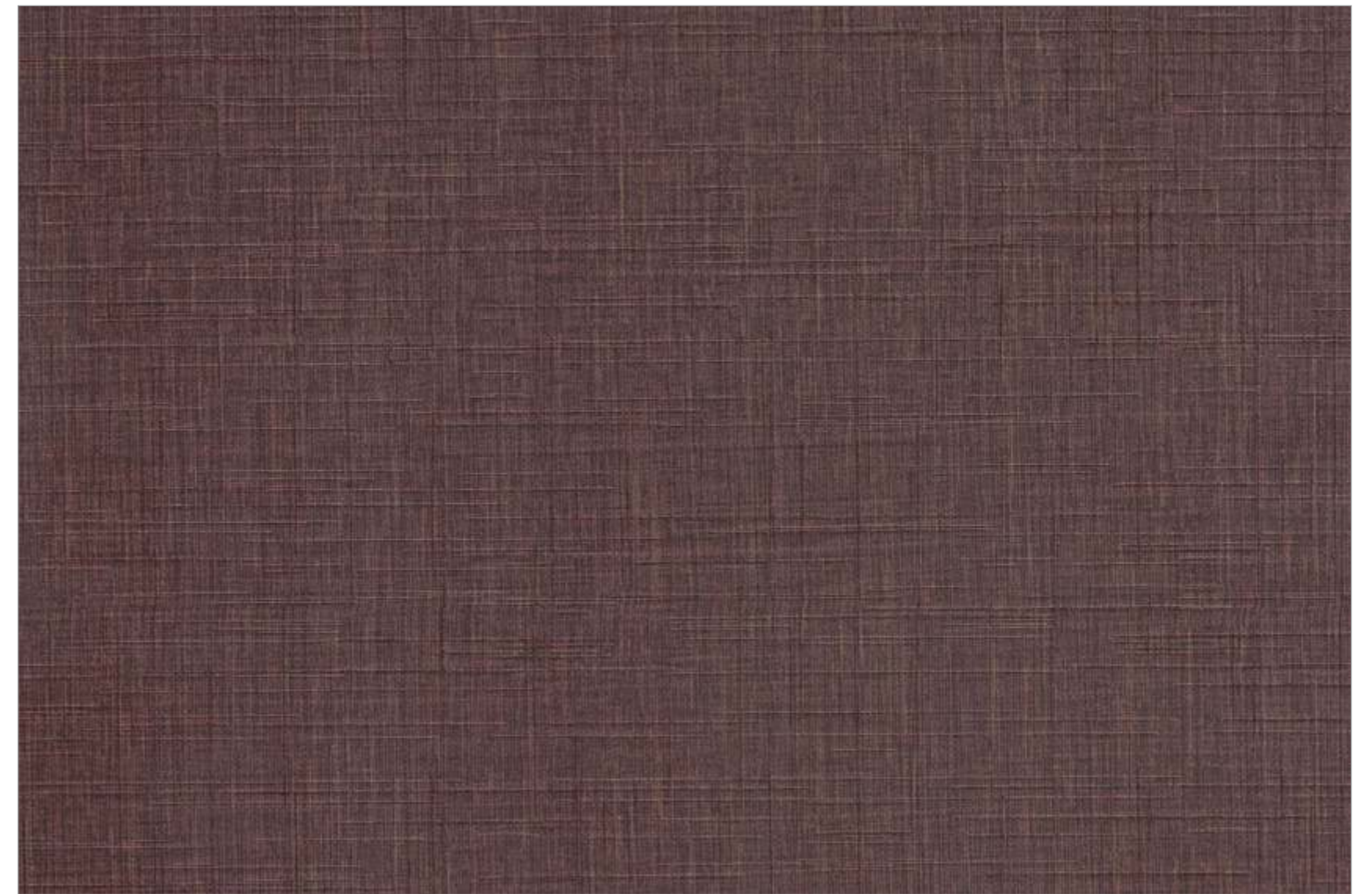
M7-6049



M7-6103



M7-6111



M7-6003



M3-6402



M3-6403



M3-6401



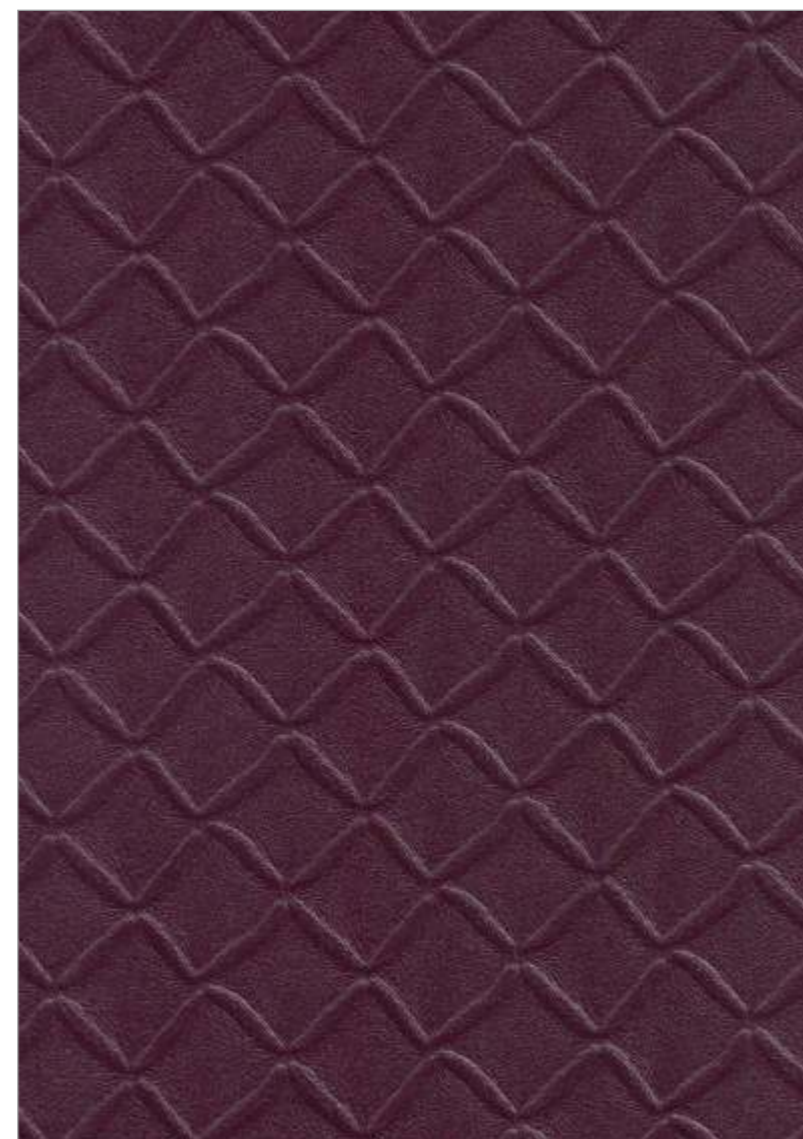
M3-6404



M3-6067



M3-6111



M3-6103





M5-6045



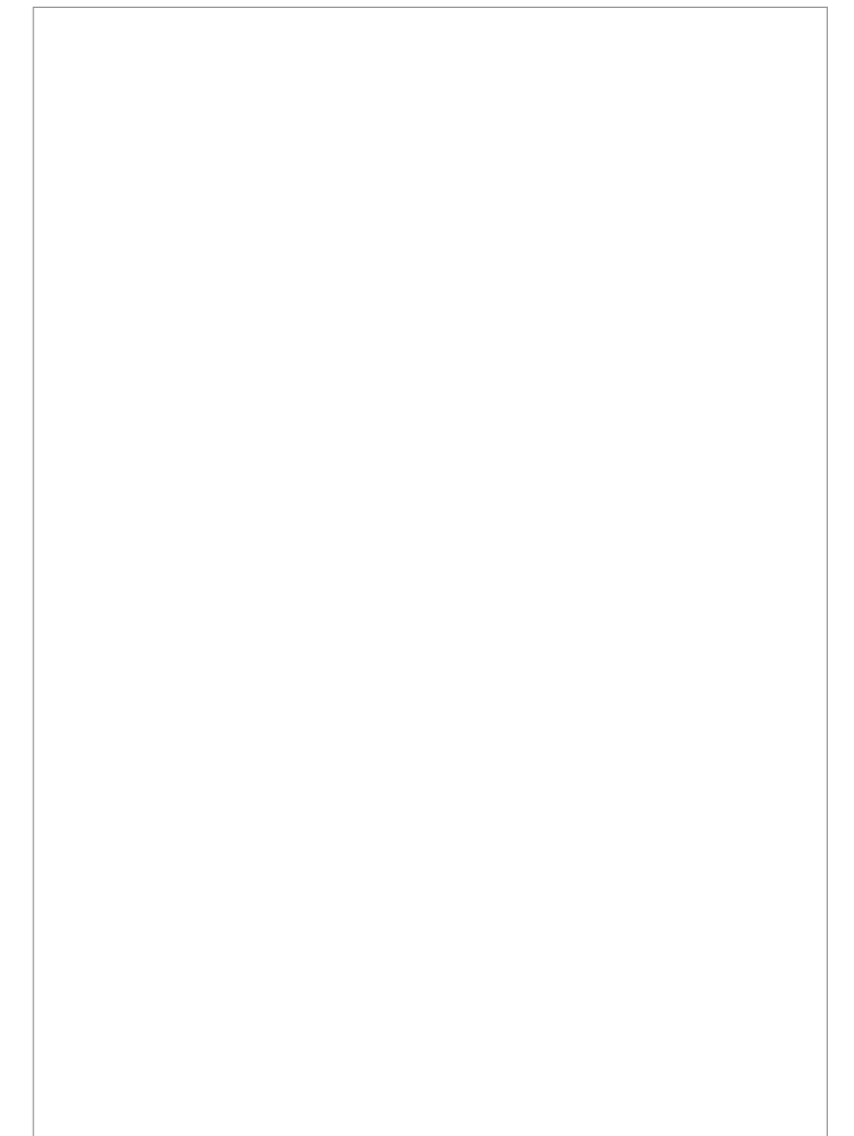
M5-6049



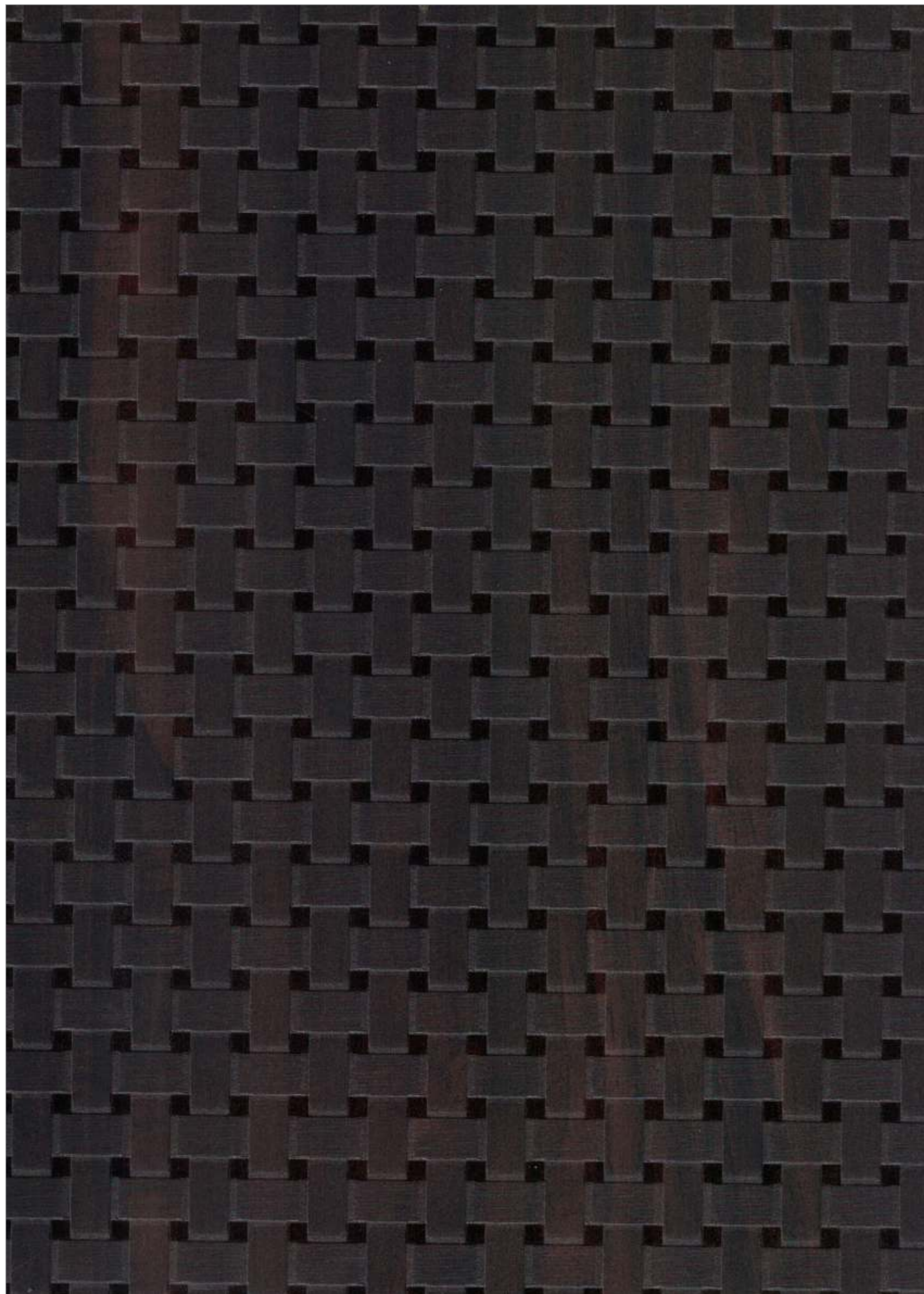
M5-6067



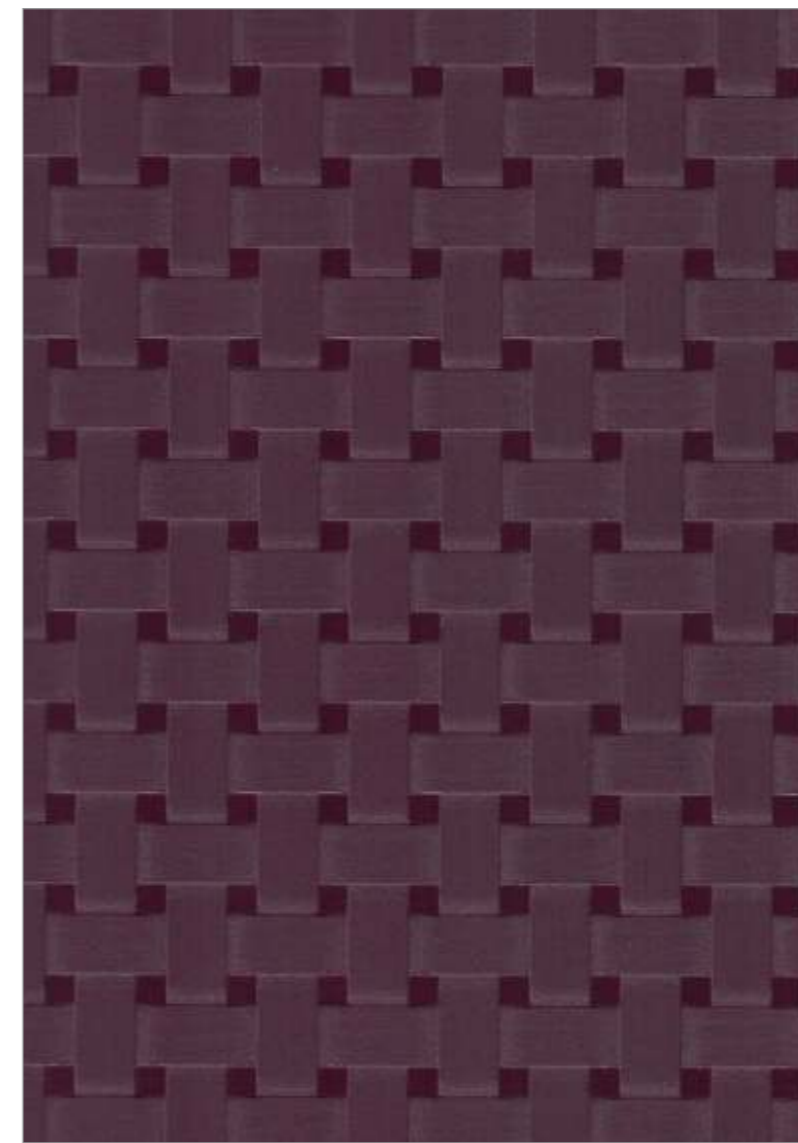
M5-6111



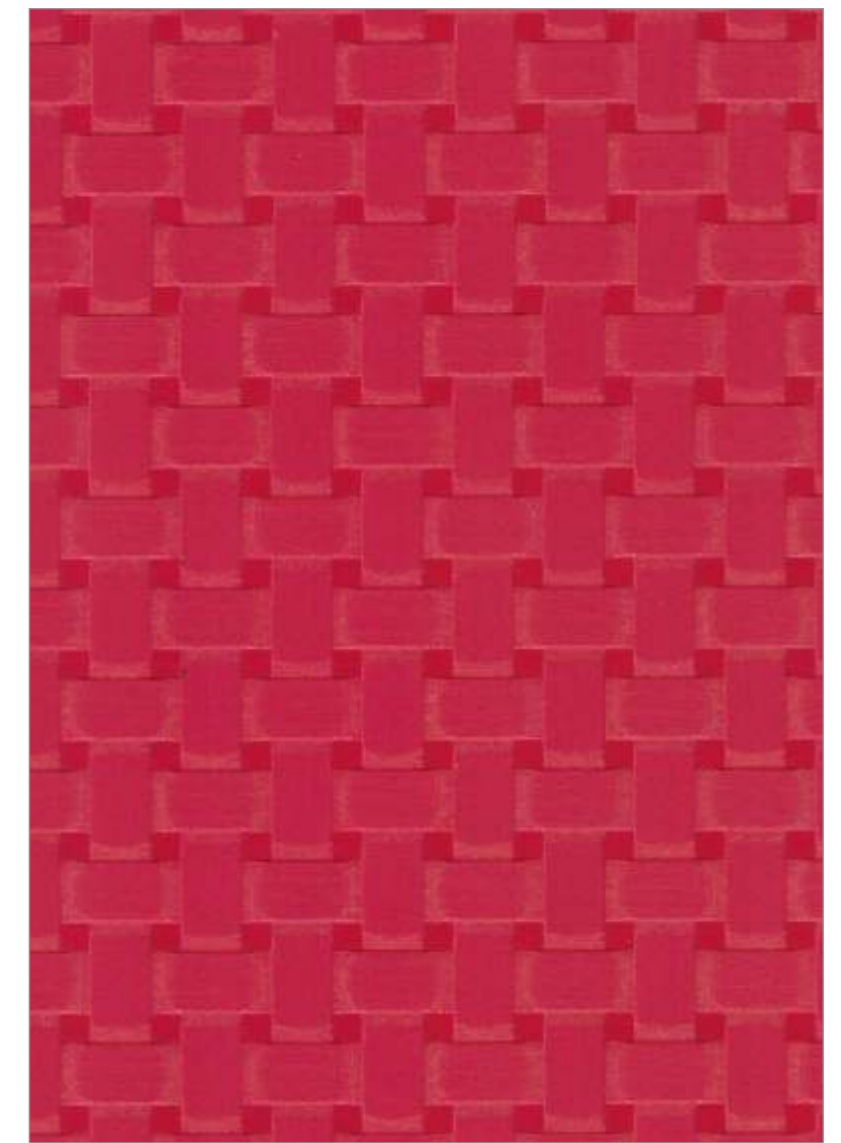
M5-6003



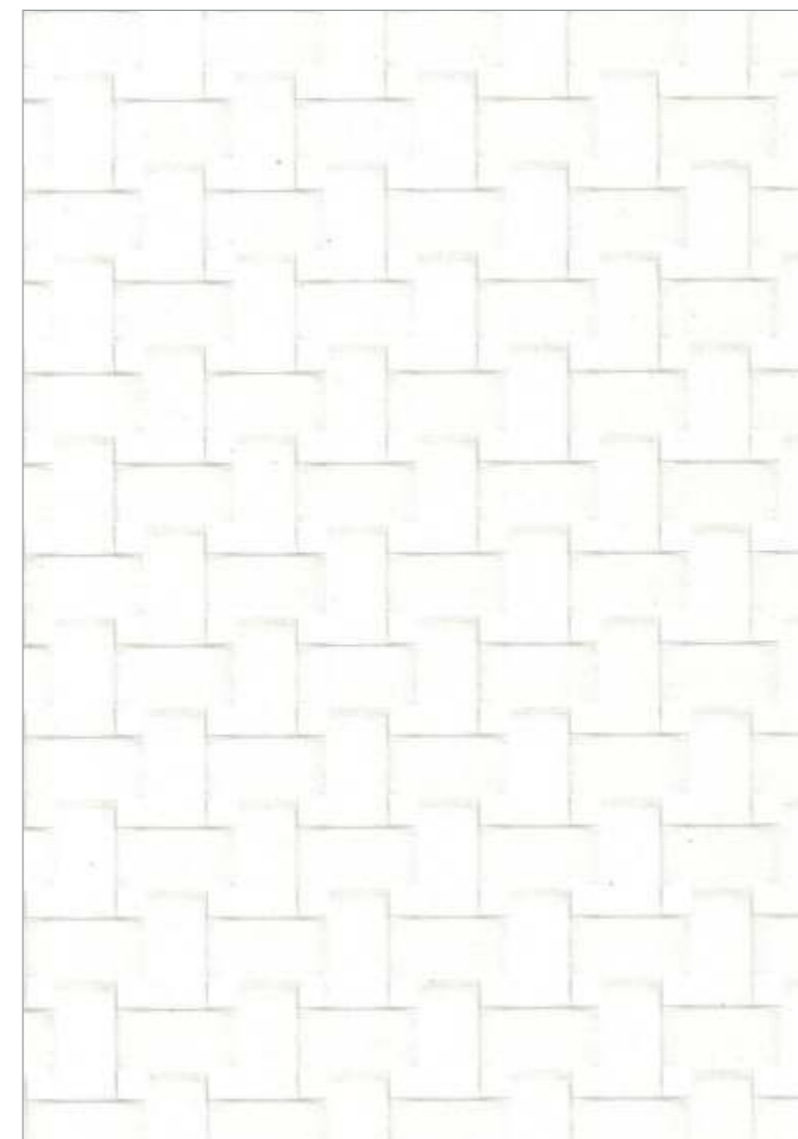
M1-6070



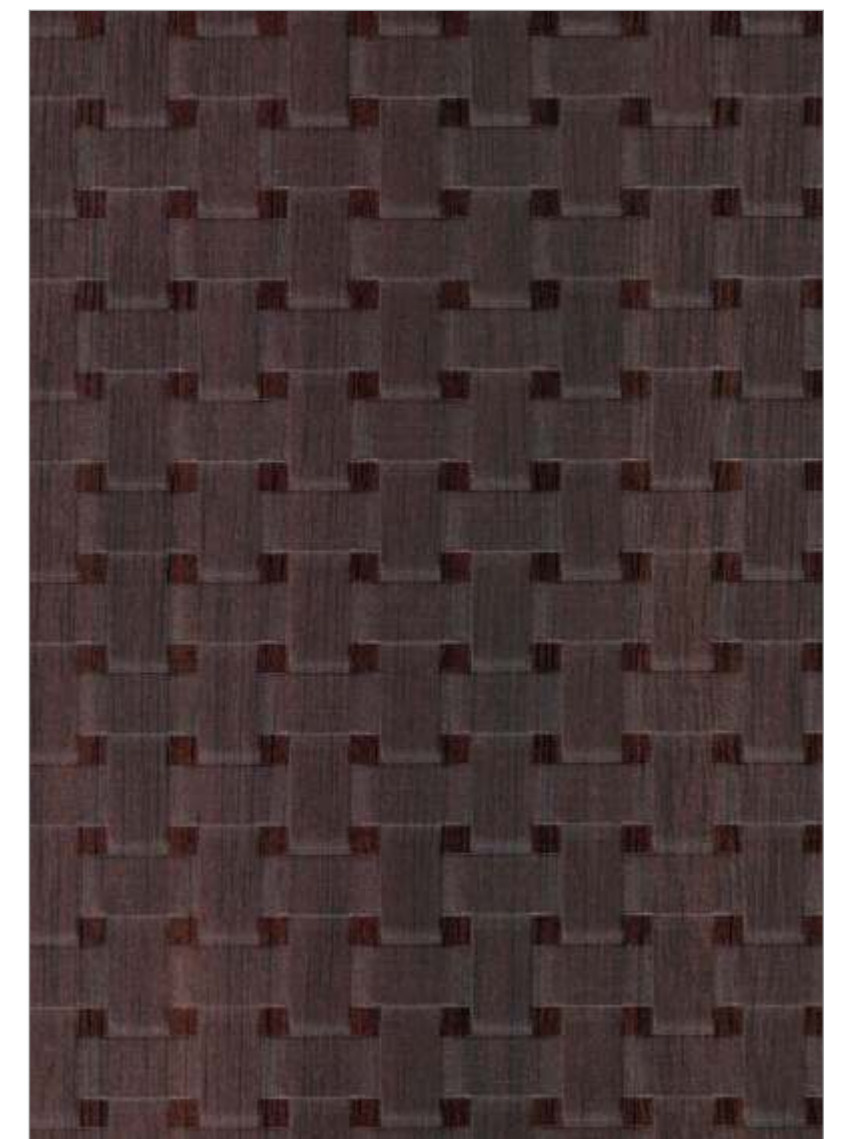
M1-6103



M1-6102



M1-6111



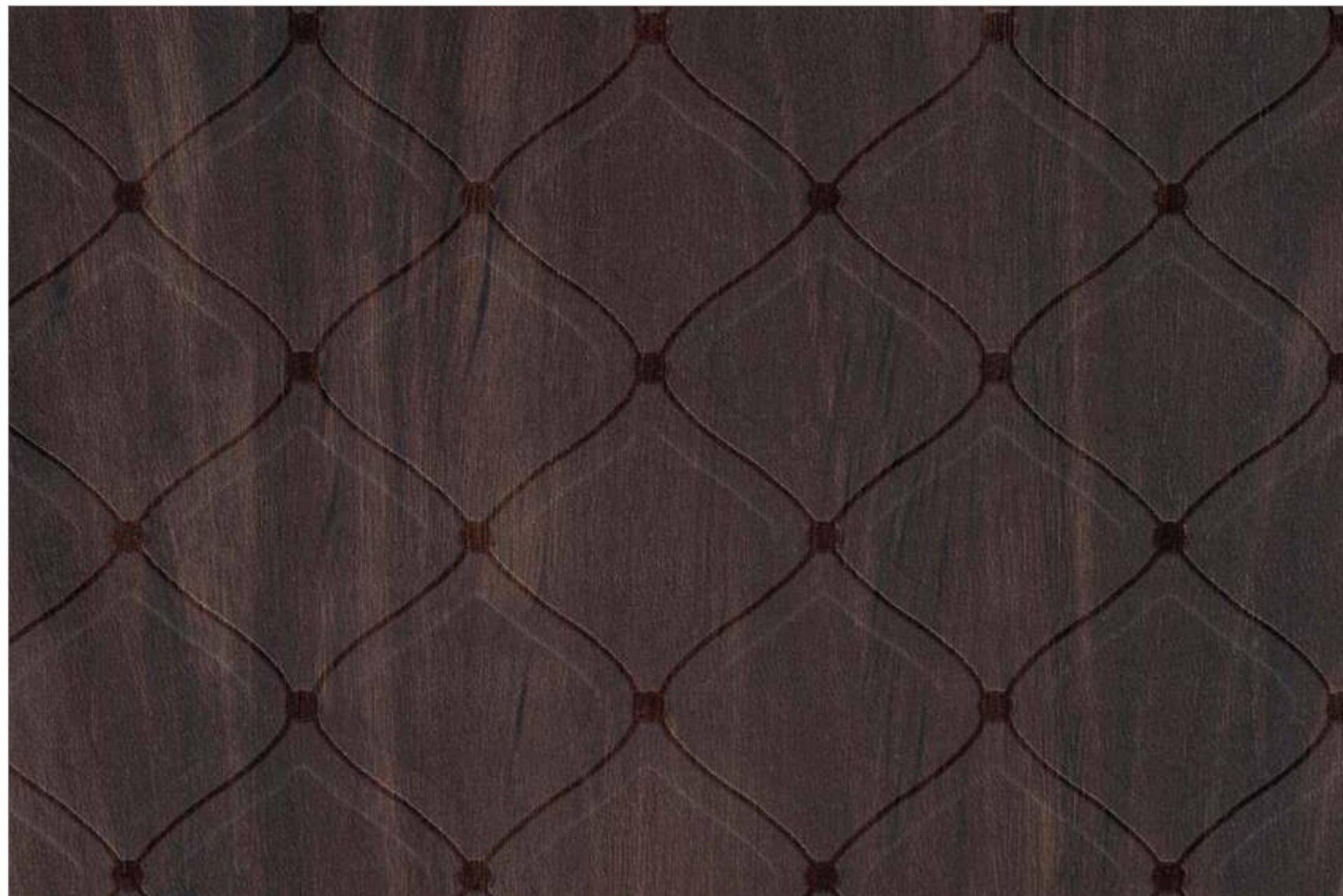
M1-6067



M4-6409



M4-6045



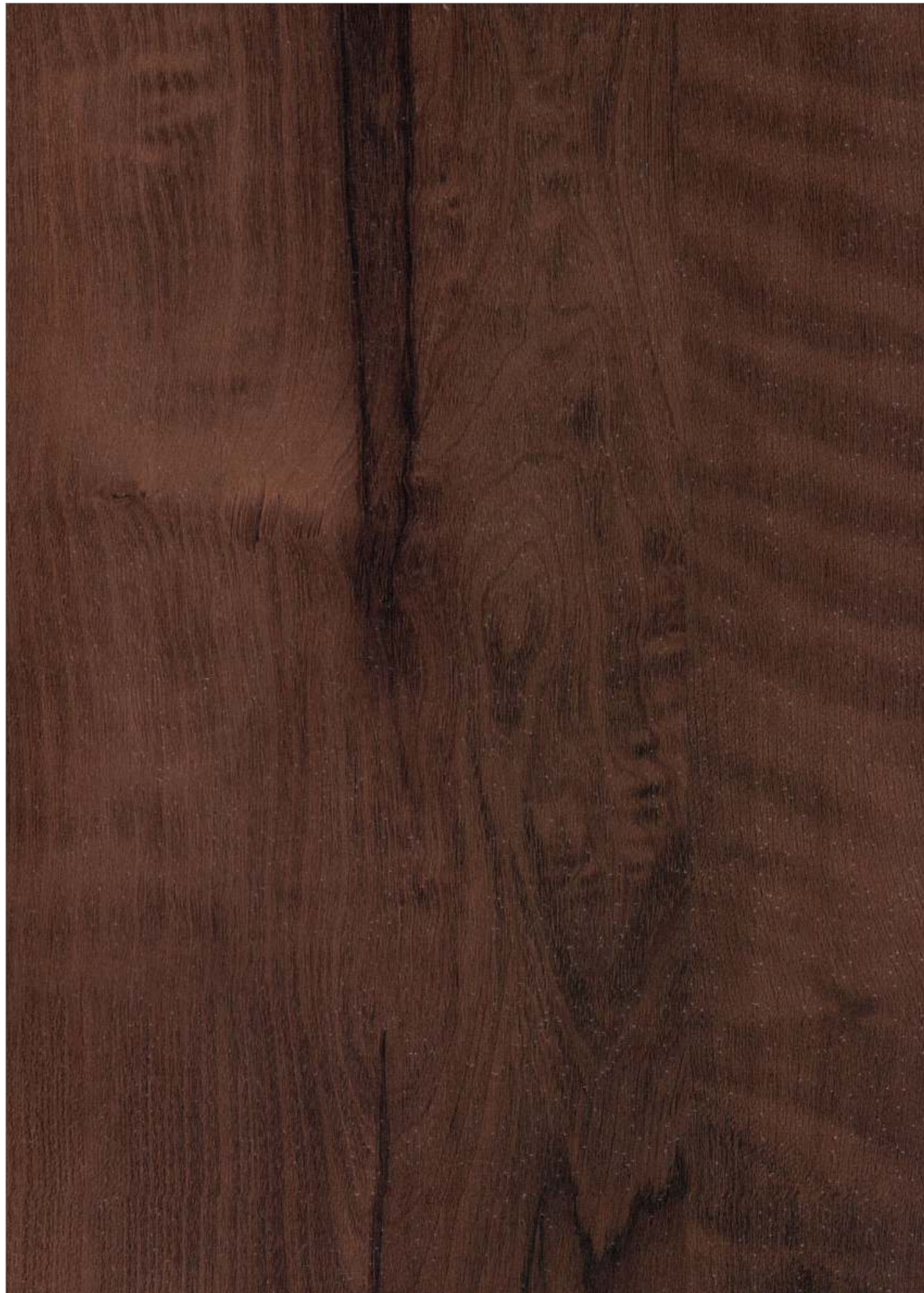
M4-6410



M4-6033



M4-6034



M6-6408



M6-6076



M6-6407



M6-6409



M6-6406



M6-6410



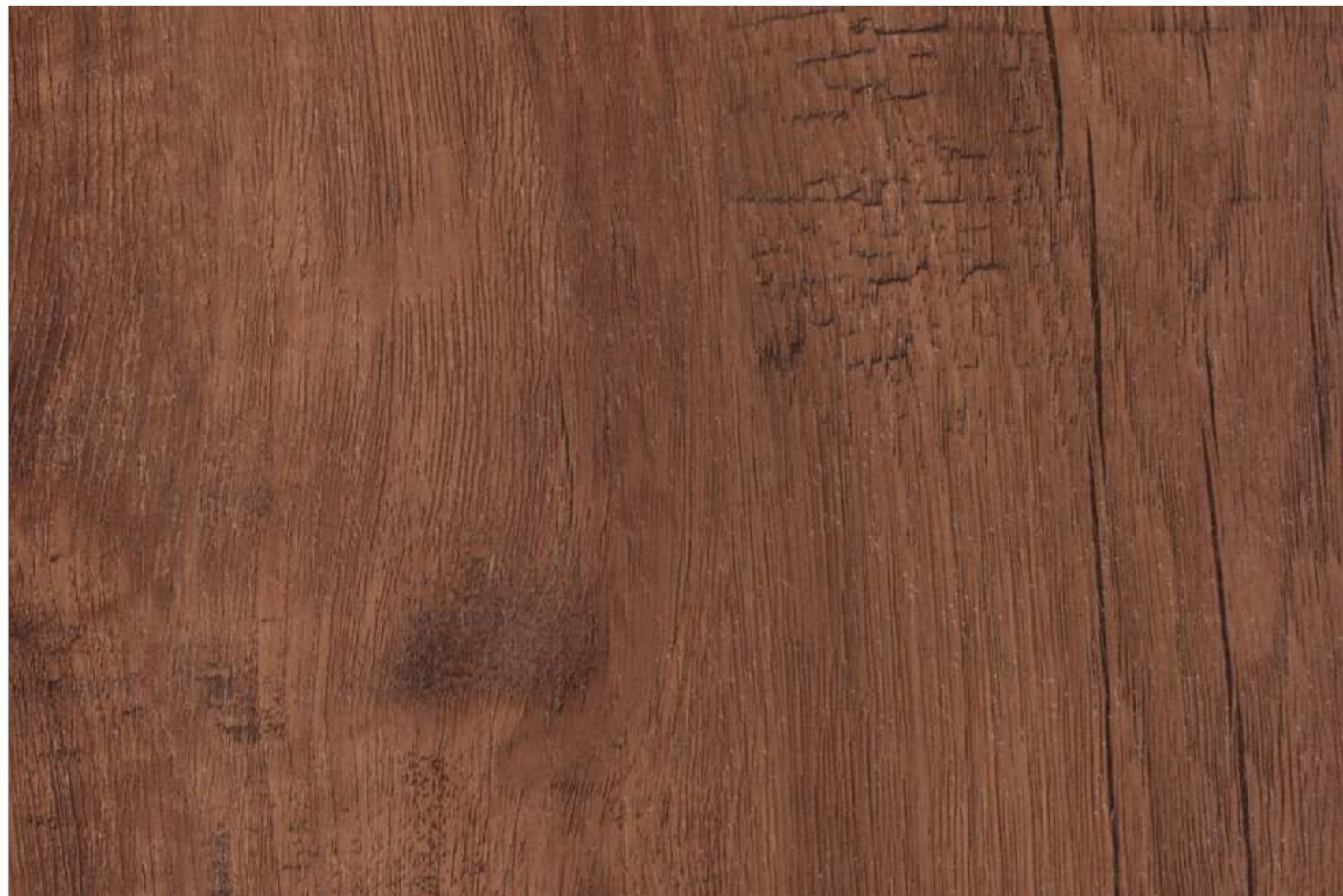
M6-6405



M6-6404



M6-6402



M6-6403



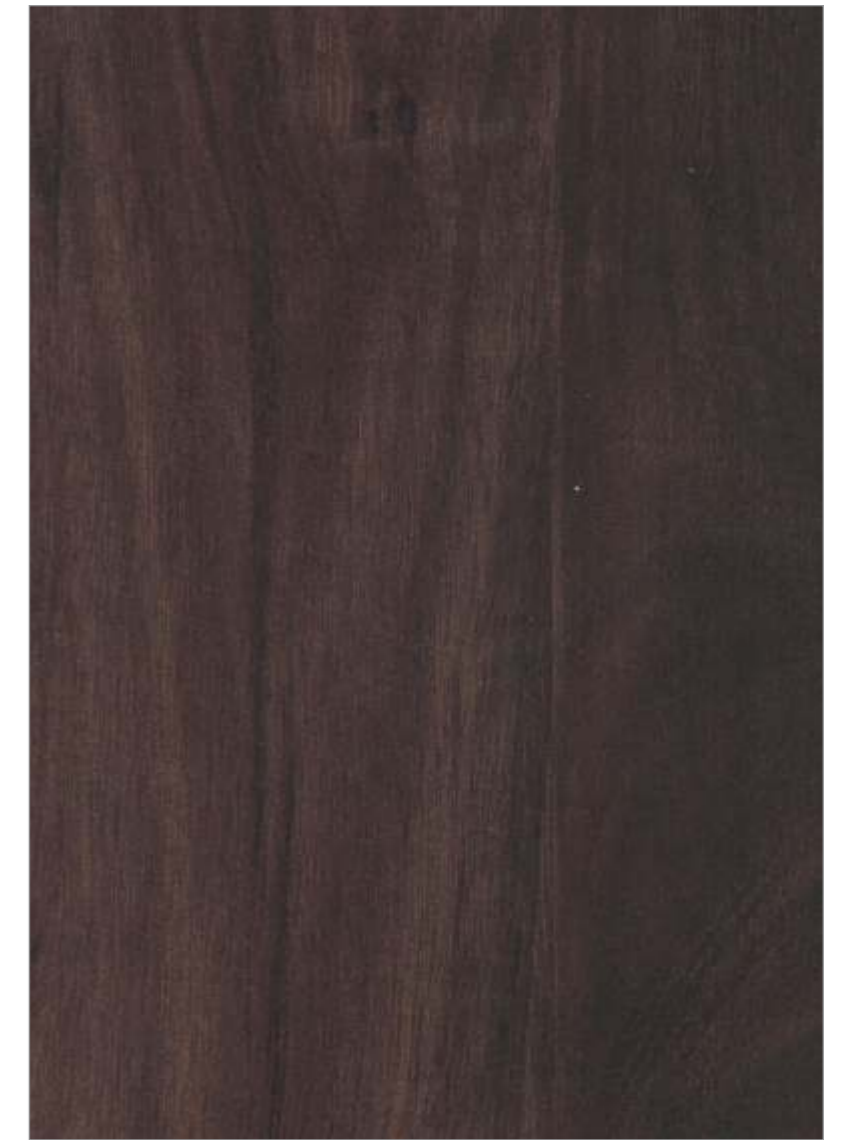
M6-6401



M9-6407



M9-6409



M9-6410



M9-6408



M9-6401



M9-6404



HGL-6411



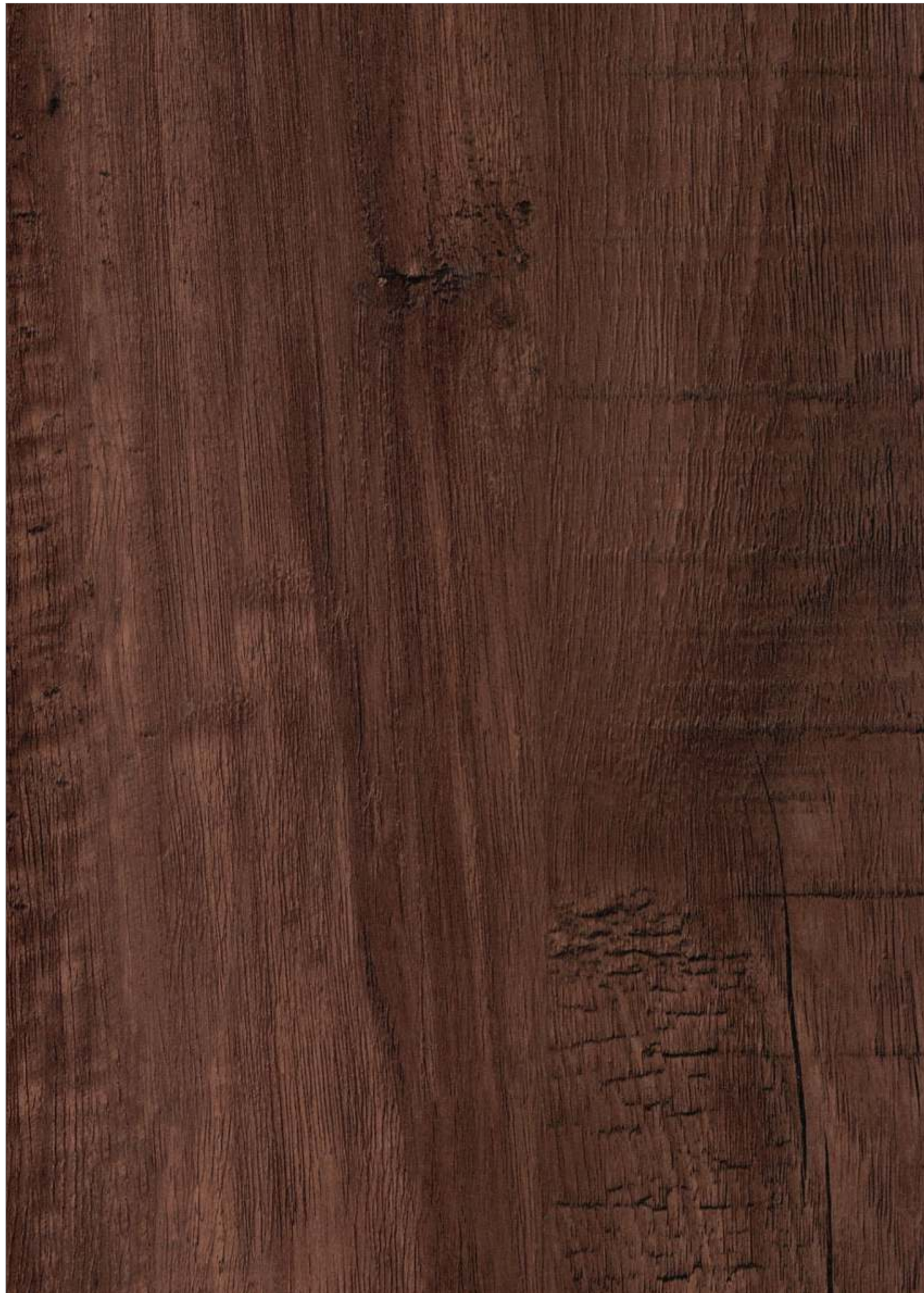
HGL-6406



HGL-6408



HGL-6405



HGL-6404



HGL-6403



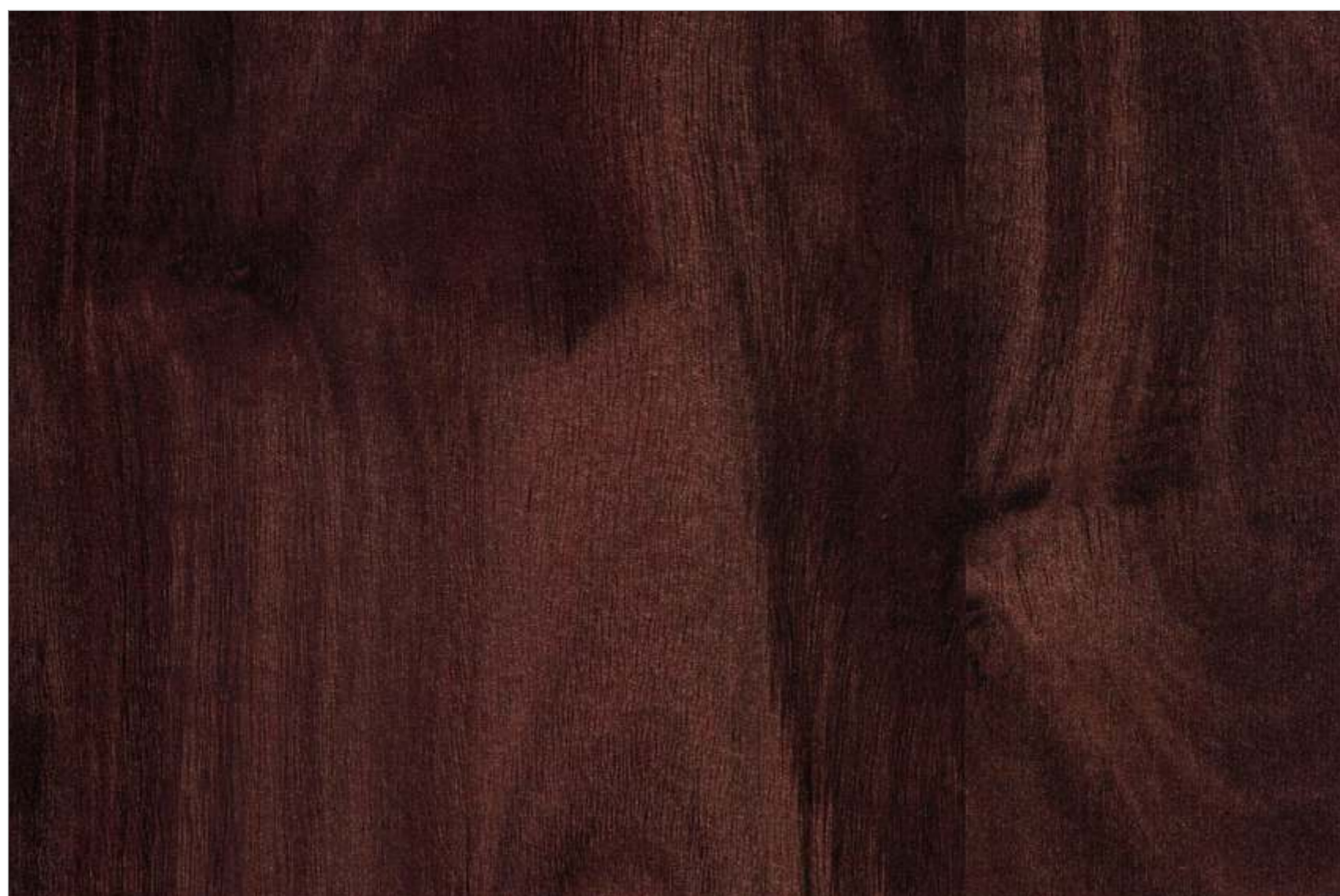
HGL-6401



HGL-6402



HGL-6410



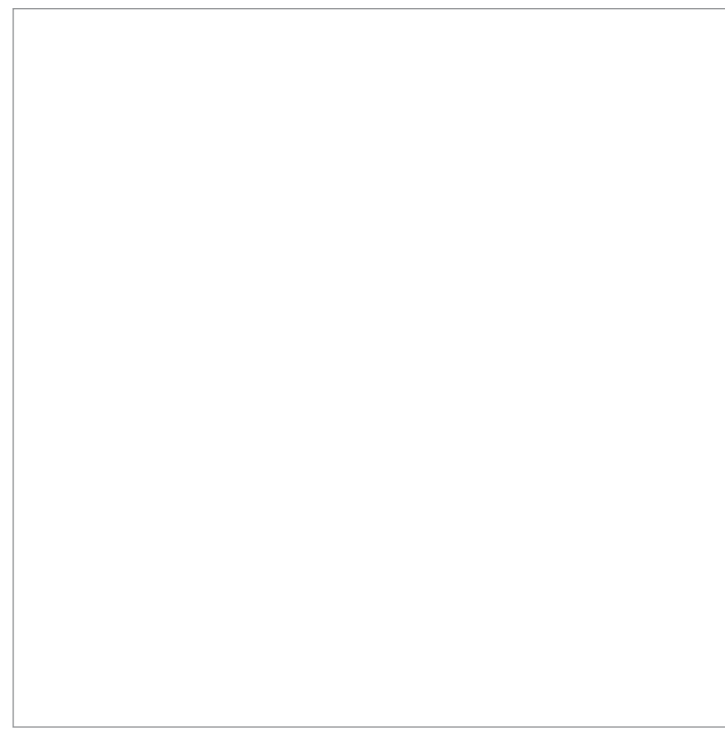
HGL-6409



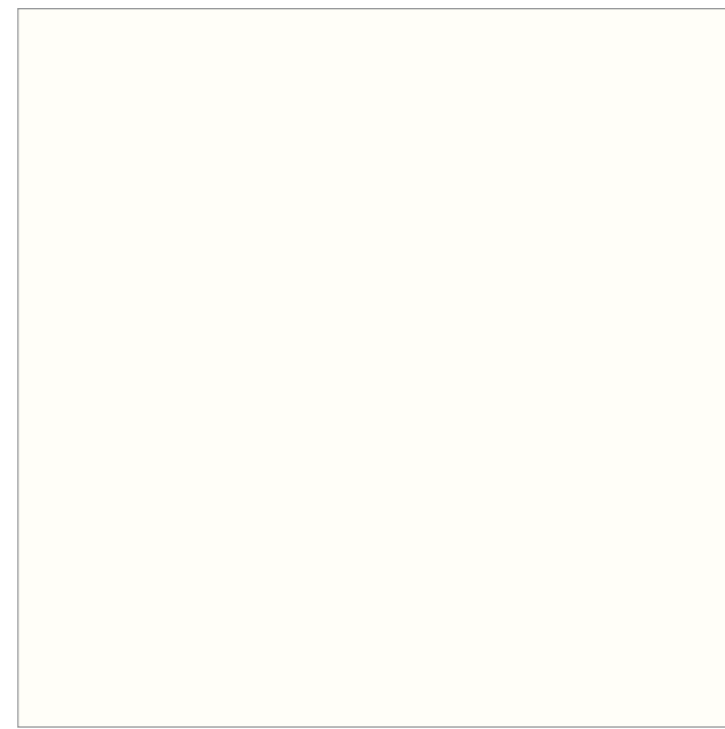
COLOR CORE



SOLID SUEDE FINISH



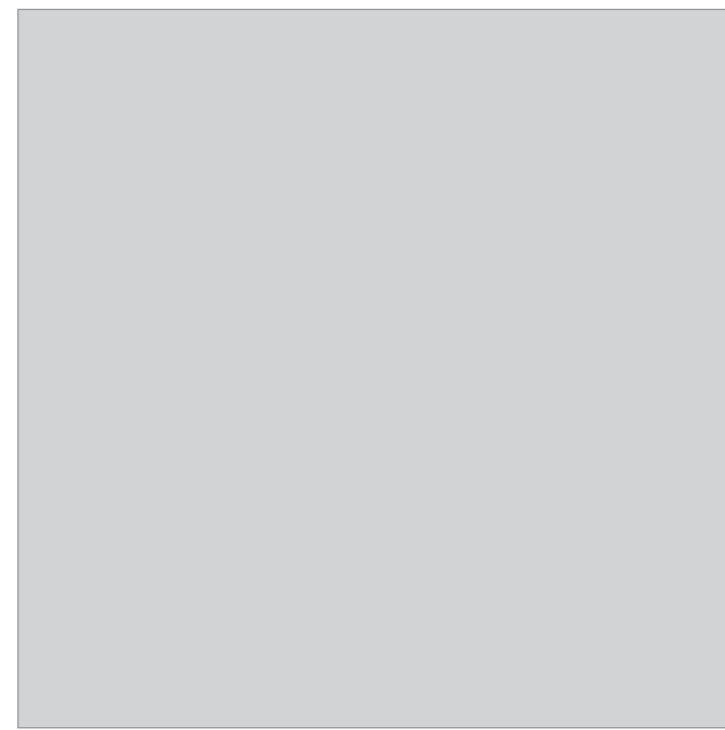
C-6110



C-6111



C-6103



C-6112



C-6102



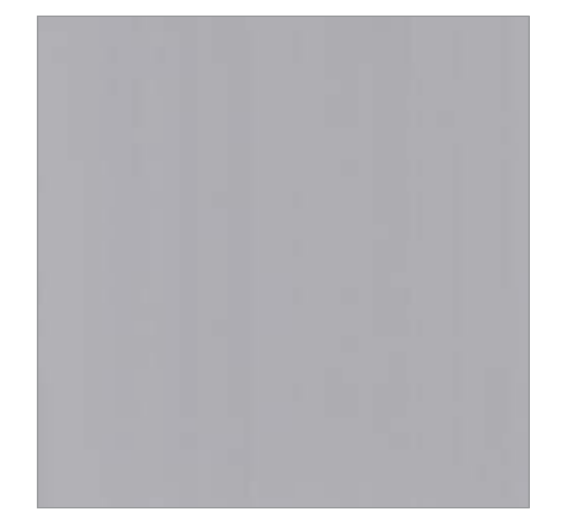
C-6101



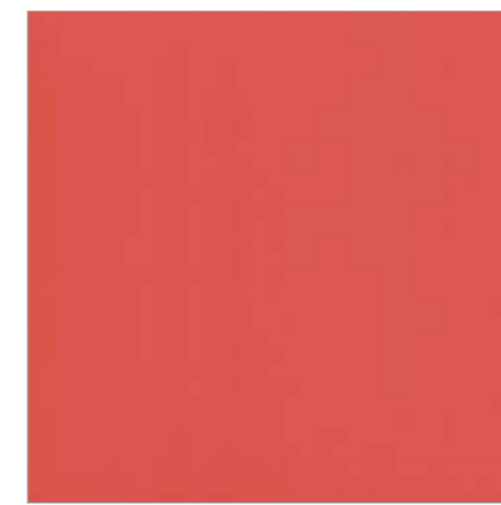
SF-6310



SF-6311



SF-6312



SF-6305



SF-6304



SF-6307



SF-6303



SF-6306



SF-6309



SF-6308



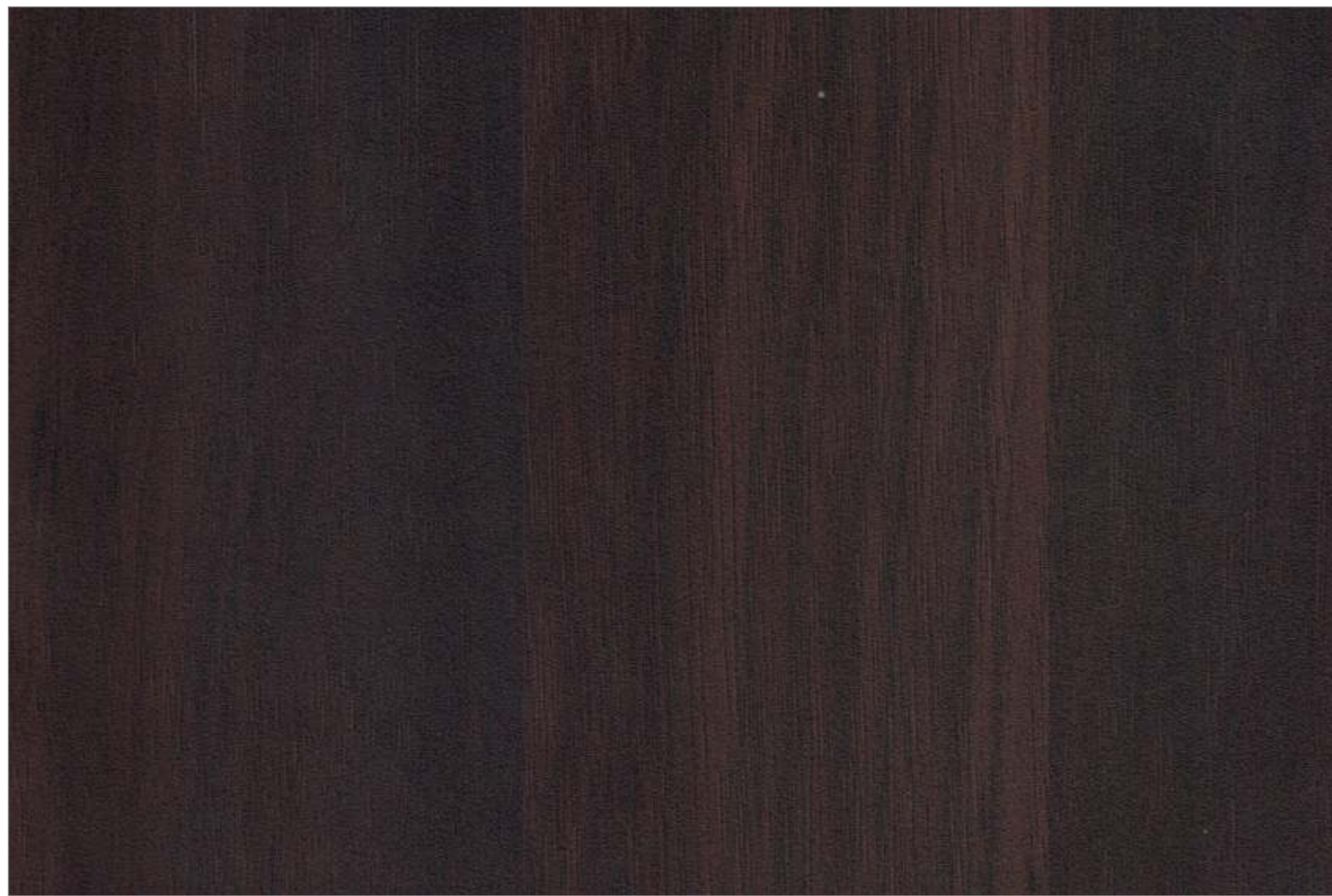
SF-6302



SF-6301

Above mentioned colors are also available in matt finish.

Above mentioned colors are also available in matt & suede finish.



SF-6406



SF-6404



SF-6401



SF-6405



SF-6402



SF-6403



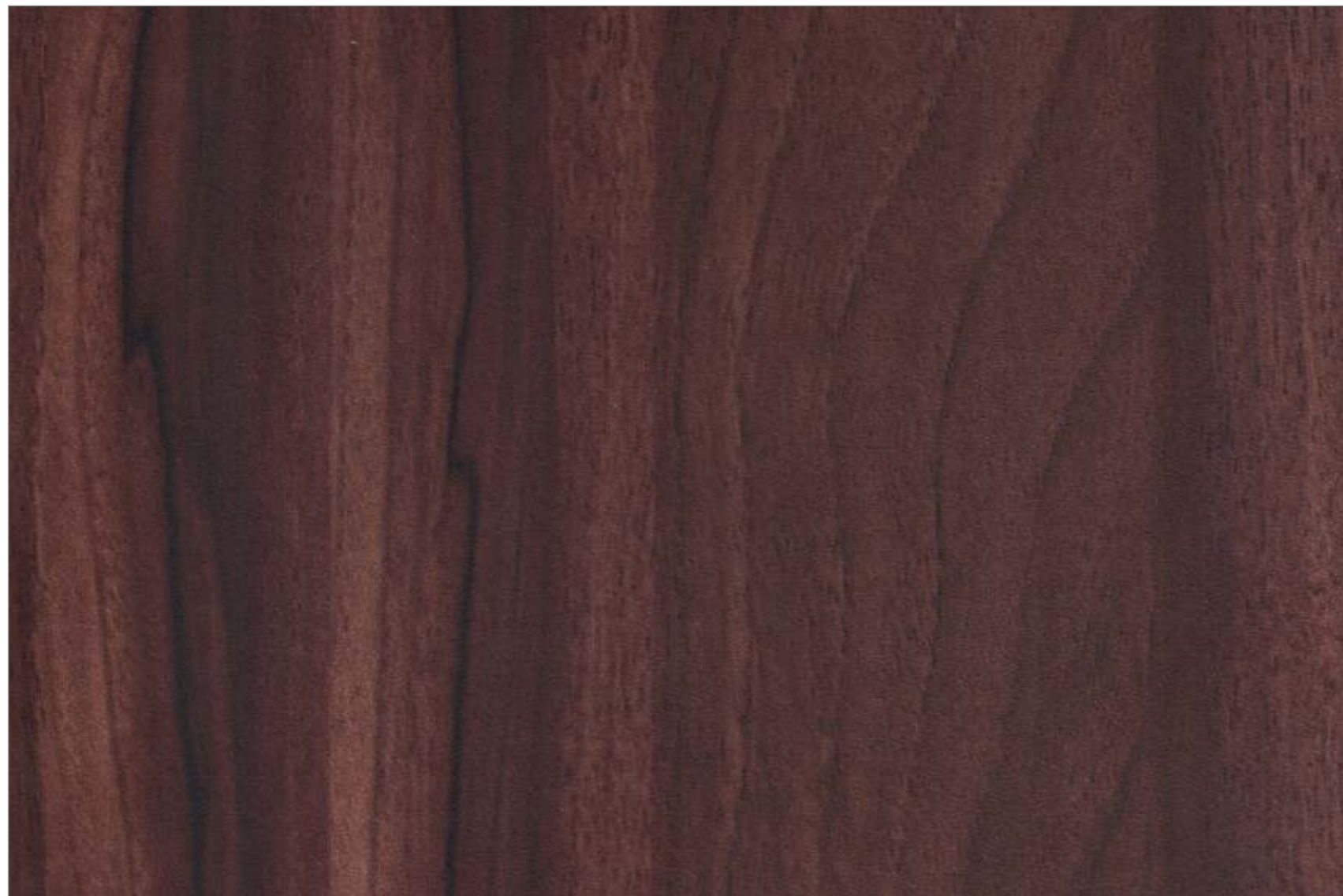
SF-6065



SF-6064



SF-6411



SF-6066



SF-6070



SF-6412



SF-6410



SF-6409



SF-6045



SF-6034



SF-6068



SF-6069



SF-6067



SF-6033



SF-6407



SF-6408



SF-6076



SF-6047



SF-6061



SF-6060



SF-6015



SF-6030



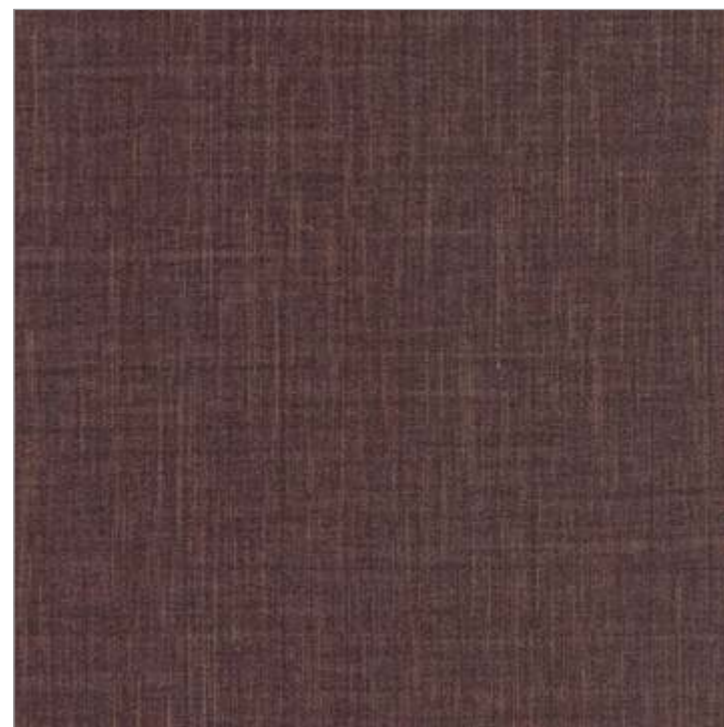
SF-6062



SF-6063



SF-6048



SF-6003



SF-6048



SF-6002

NATURLICH OAK

Sr	Design no	PG
01	M8-6065	01
02	M8-6404	02
03	M8-6069	03
04	M8-6068	03
05	M8-6410	04
06	M8-6409	04

DIAMANTE DOT

Sr	Design no	PG
7	M2-6412	5
8	M2-6066	5
9	M2-6411	6
10	M2-6111	6
11	M2-6406	7
12	M2-6405	7
13	M2-6408	8

CROSS LINER

Sr	Design no	PG
14	M7-6047	9
15	M7-6103	9
16	M7-6111	9
17	M7-6048	10
18	M7-6049	10
19	M7-6003	10

SPRINKLER SPHERE

Sr	Design no	PG
20	M3-6402	11
21	M3-6403	12
22	M3-6401	12
23	M3-6404	12

SPRINKLER SPHERE

Sr	Design no	PG
24	M3-6067	13
25	M3-6111	14
26	M3-6103	14

STRIPO LAT

Sr	Design no	PG
27	M5-6045	15
28	M5-6067	15
29	M5-6049	16
30	M5-6111	16
31	M5-6003	16

LINE O STRIP

Sr	Design no	PG
32	M1-6070	17
33	M1-6103	18
34	M1-6102	18
35	M1-6111	18
36	M1-6067	18

ABISCO NUEUE

Sr	Design no	PG
37	M4-6409	19
38	M4-6410	19
39	M4-6045	20
40	M4-6033	20
41	M4-6034	20

VENEER OAK

Sr	Design no	PG
42	M6-6408	21
43	M6-6076	22

VENEER OAK

Sr	Design no	PG
44	M6-6407	22
45	M6-6409	23
46	M6-6410	23
47	M6-6406	24
48	M6-6405	24
49	M6-6404	25
50	M6-6403	25
51	M6-6402	26
52	M6-6401	26

PERFECTA OPACO

Sr	Design no	PG
53	M9-6407	27
54	M9-6408	27
55	M9-6409	28
56	M9-6410	28
57	M9-6401	28
58	M9-6404	28

HIGH GLOSS

Sr	Design no	PG
59	HGL-6411	29
60	HGL-6408	29
61	HGL-6406	30
62	HGL-6405	30
63	HGL-6404	31
64	HGL-6403	32
65	HGL-6401	32
66	HGL-6402	32
67	HGL-6410	33
68	HGL-6409	33

COLOUR CORE

Sr	Design no	PG
69	C-6110	35
70	C-6111	35
71	C-6103	35
72	C-6112	35
73	C-6102	35
74	C-6101	35

SOLID COLORS - SF

Sr	Design no	PG
75	SF-6310	36
76	SF-6311	36
77	SF-6312	36
78	SF-6305	36
79	SF-6304	36
80	SF-6307	36
81	SF-6303	36
82	SF-6306	36
83	SF-6309	36
84	SF-6308	36
85	SF-6302	36
86	SF-6301	36

SUEDE FINISH

Sr	Design no	PG
87	SF-6406	37
88	SF-6405	37
89	SF-6404	38
90	SF-6401	38
91	SF-6402	38
92	SF-6403	38

SUEDE FINISH

Sr	Design no	PG
93	SF-6065	39
94	SF-6066	39
95	SF-6064	40
96	SF-6411	40
97	SF-6070	40
98	SF-6412	40
99	SF-6410	41
100	SF-6409	41
101	SF-6068	41
102	SF-6069	41
103	SF-6045	42
104	SF-6034	42
105	SF-6067	42
106	SF-6033	42
107	SF-6407	43
108	SF-6408	43
109	SF-6061	43
110	SF-6060	43
111	SF-6076	44
112	SF-6047	44
113	SF-6015	44
114	SF-6030	44
115	SF-6062	45
116	SF-6063	45
117	SF-6049	45
118	SF-6003	45
119	SF-6048	45
120	SF-6002	45

PROPERTIES	SPECIFIED VALUES AS PER ISI:2046-1995, TYPE S, SGS	MARKWEL CONFORMS
Thickness	1.00 MM (±10%)	✓
Resistance to surface wear	350(Revolution)	✓
Resistance to immersion in boiling water - Mass increase(%) - Thickness increase(%) - Appearance	10.0(Maximum) 10.8(Maximum) Not worse than 4	✓
Resistance to dry heat 180c	Not worse than 4	✓
Dimensional stability at deviated temperature - Longitudinal(%) - Transverse(%)	0.55(Maximum) 1.025(Maximum)	✓
Dimensional stability at 20c - Longitudinal(%) - Transverse(%)	0.375(Maximum) 0.60(Maximum)	✓
Resistance to impact by small diameter ball	20n(Minimum)	✓
Resistance to cracking	Not worse than 4	✓
Resistance to scratching	20n(Minimum)	✓
Resistance to staining	Not worse than 5	✓
Resistance to colour change (wool standards) - In xenon arc light - In enclosed carbon arc light	Not worse than 6 Not worse than 5	✓
Resistance to cigarette burns	Not worse than 3	✓
Resistance to steam	Not worse than 4	✓
Appearance	Should be free from foreign particles	✓

Designed By: www.ites-india.com | 0 9377663409

LIMITED WARRENTY

- Kindly check the sheet in all aspects after purchasing & prior to cutting.
- In case of mfg. defects, only replacement of used sheet will be made
- No warranty for corner crack or air bubble.
- No claim will be entertained thereafter in any case of the specifics
- खरीदने के तुरंत बाद और काटने से पहले शीट को सभी तरह से चेक करके इस्तेमाल करें
- कोई भी मैन्युफैक्चरिंग क्षति के पाये जाने पर सिर्फ शीट का रिप्लेसमेंट ही मिलेगा
- कार्निर क्रेक और एयर बबल के लिए कोई भी वॉरंटी नहीं है
- निर्दिष्ट किये गये किसी भी मामले में कोई दावा नहीं किया जाएगा

